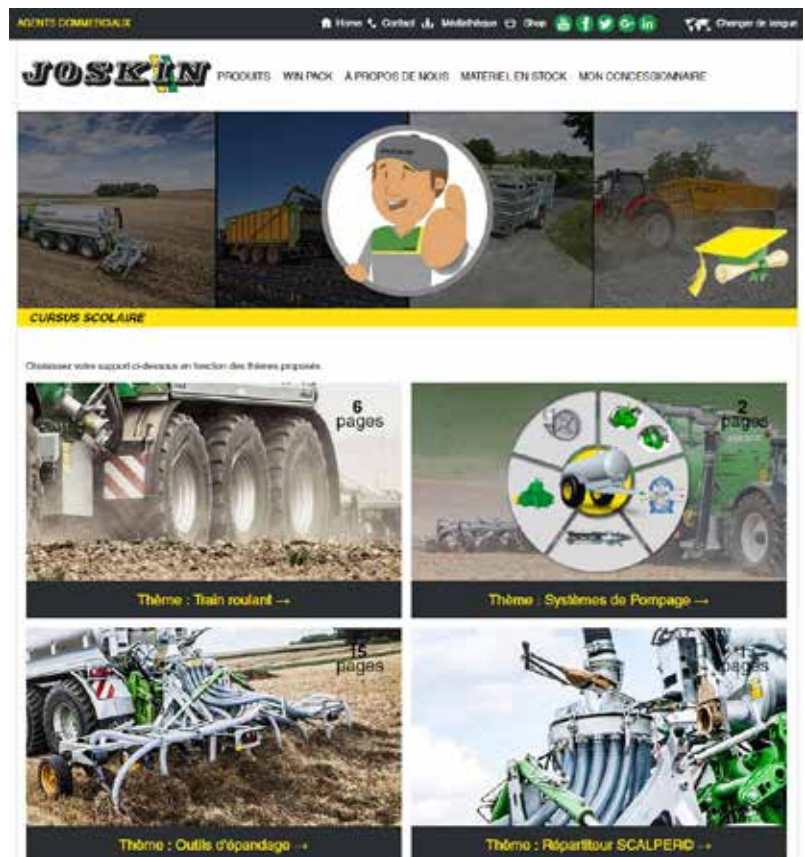




In order to meet professor's repeated requests and student's real needs, the JOSKIN manufacturer sets an explanatory database online with themes regarding the on board agricultural mechanics and technologies on its machines.

"It is a real course accessible to all", explains Marc Baguette, responsible of this project at JOSKIN. "Various themes are covered in a didactic and pedagogical way. Supports are various (pictures, descriptions, diagrams, videos, etc.) and hyperlinks allow to navigate comfortably to make the visit – or study! – funny and intuitive. "

The reputation of liability, quality and innovation of the JOSKIN machines will certainly attract more than one person on this online school course. And that is all the better! Because the objective is of course to take part in and support the training of tomorrow's professionals, specifies the Belgian company. Since young people are little attracted by agricultural machinery, there is often a shortage of qualified workforce.



Non-contractual document. Data can change without notice. The pictures do not necessary correspond to standard equipment.

CONTACT : Caroline METZ - Ets JOSKIN s.a. - rue de Wergifosse 39 – 4630 Soumagne
Tel : +32 4 377 35 45 - Fax : +32 4 377 10 15 - E-mail : caroline.metz@joskin.com

Joskin was already offering, on its site of Soumagne, to students from technical and professional sections at the end of their school career, a training area with industrial machines and tools in modern premises, which can also be used by the local professors for pedagogical ends.

The teaching material, called "school course", is available in the 7 sales languages used by JOSKIN (French, English, German, Dutch, Polish, Russian and Spanish) on the address... joskin.com/cursus

Even if the tool is deemed to evolve and enrich, various themes are already proposed:

- *running gears,*
- *filling systems,*
- *spreading implements,*
- *macerator,*
- *management and control.*

Professors, students, users from the agricultural world, as well as all curious persons, will find here a precious source of information to complete their knowledge.



Non-contractual document. Data can change without notice. The pictures do not necessary correspond to standard equipment.

CONTACT : Caroline METZ - Ets JOSKIN s.a. - rue de Wergifosse 39 – 4630 Soumagne
Tel : +32 4 377 35 45 - Fax : +32 4 377 10 15 - E-mail : caroline.metz@joskin.com